

Action statement

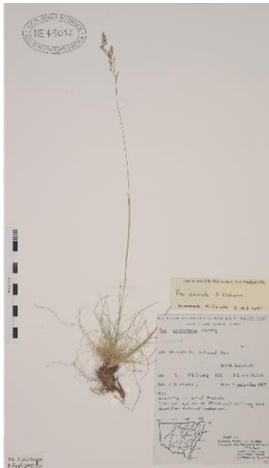
Flora and Fauna Guarantee Act 1988

Fine-leaf Snow-grass (*Poa clivicola*)

Taxon ID: 502585

Action statements are developed under the *Flora and Fauna Guarantee Act 1988* (FFG Act). Their preparation and implementation complement the FFG Act strategy *Protecting Victoria's Environment – Biodiversity 2037* and its vision that “Victoria’s biodiversity is healthy, valued and actively cared for”.

Species and Distribution



Fine-leaf Snow-grass. Image by Atlas of Living Australia.



This habitat distribution model displays the indicative range of Fine-leaf Snow-grass based on occurrence records and likely habitat. See [NatureKit](#) for an interactive map.

Conservation Status

Endangered

Listing criteria: 4.1.2(a)(b)(i)(ii)(iii)(v) of the Flora and Fauna Guarantee Regulations 2020.

This means that:

- its geographic distribution is highly restricted; and
- the distribution of the population or habitat of the taxon is severely fragmented; and
- it is restricted to a limited number of areas that are subject to the same threat or suite of threats that can impact all individuals present; and
- there is a continuing decline or reduction in:
 - its extent of occurrence; and
 - its area of occupancy; and
 - the area, extent or quality of habitat; and
 - the numbers of mature individuals.

Corresponding International Union for the Conservation of Nature (IUCN) criteria: B2ab(i,ii,iii,v).

More information on IUCN listing criteria can be found here: [IUCN Red List Criteria](#).

Species Information

Species information such as its description, distribution, ecology and references are provided in the [Fine-leaf Snow-grass Species Forecast Report](#) and [VicFlora](#).

Threats

The threats below have been identified through expert consultation, published literature and spatial analysis.

Threat	Description
Fire	
Altered fire regimes	<ul style="list-style-type: none"> A hotter, drier climate may increase the likelihood or frequency of bushfires that impact the species' habitat, with the potential to reduce habitat quality and/or extent.
Habitat loss, degradation or modification	
Livestock	<ul style="list-style-type: none"> Livestock can cause habitat degradation through the combined effects of herbivory, trampling, soil compaction, pugging of wet areas, and excess nutrient loads.
Human disturbance	
Construction, development and/or infrastructure	<ul style="list-style-type: none"> Construction and development may result in direct removal of habitat, or indirect impacts to habitat through changes to water regimes and increased risk of weed incursion.
Introduced species	
Deer	<ul style="list-style-type: none"> Introduced deer species (Sambar deer (<i>Cervus unicolor</i>), Red Deer (<i>Cervus elaphus</i>) and Fallow Deer (<i>Dama dama</i>)) degrade habitat through herbivory, antler-rubbing, trampling, pugging of wet soils, increasing nutrient loads, erosion of waterway edges, and increasing the accessibility of habitat to introduced predators and introduced plants.
Feral horses	<ul style="list-style-type: none"> Feral horses (<i>Equus caballus</i>) severely degrade habitat through herbivory, trampling, pugging of wet soils, increasing nutrient loads, and erosion of waterway edges. Their presence can also disperse seeds from introduced plant species, altering habitat composition and structure.
Feral pigs	<ul style="list-style-type: none"> Feral pigs (<i>Sus scrofa</i>) cause direct mortality and damage habitat through pugging and wallowing that compacts soils. Pigs can also cause erosion and increase nutrient loads that result in degraded water quality and changes to vegetation structure.
Introduced plants	<ul style="list-style-type: none"> Introduced plants can directly compete for resources and reduce species abundance and diversity.

Conservation Objectives

Conservation objectives are informed by the conservation status and criteria in which the species was listed under the FFG Act. This provides a framework to understand how we can work towards recovery and improve the species' conservation status over time as per the objectives of the FFG Act.

The key objectives of this action statement are:

- Mitigate threats to populations and habitat to increase resilience, increase genetic fitness and minimise future population decline;
- Increase the Fine-leaf Snow-grass's range and/or extent, by providing opportunities for natural movement/dispersal;
- Increase knowledge of biology, ecology, distribution, demography, emerging threats, and conservation requirements; and
- Support community participation and improve awareness of the Fine-leaf Snow-grass and conservation of its habitat.

Conservation Actions

The actions below have been identified through expert consultation, published literature and spatial analysis. Actions are listed in alphabetical order to allow all interested parties to prioritise based on their context, capacity and capability. Landscape scale actions may mitigate threats for other species. For more information on where to undertake actions that benefit multiple species and identify the most beneficial locations to undertake actions for this species, please refer to [NatureKit](#).

Action	Description
Avoid and/or mitigate impacts associated with fire management	<ul style="list-style-type: none"> Undertake biodiversity values check prior to fuel management in areas of the species habitat, to confirm treatment suitability and timing. Ensure that species distribution data and ecological information is available and considered in fire management activities.
Community engagement and awareness	<ul style="list-style-type: none"> Increase landholder awareness of the species presence and ecological needs, and the impacts of livestock grazing to the species and its habitat. Provide guidance on the changes to grazing that may be required, such as exclusion, to support the recovery of the species.
Control deer*	<ul style="list-style-type: none"> Implement and maintain effective control of deer in priority areas.
Control feral horses*	<ul style="list-style-type: none"> Implement and maintain effective control of feral horses in priority areas.
Control feral pigs*	<ul style="list-style-type: none"> Implement and maintain effective control of feral pigs in priority areas.
Control introduced plants*	<ul style="list-style-type: none"> Implement and maintain effective control of introduced plants in priority areas and undertake revegetation with appropriate native species, where required.
Protect key habitat	<ul style="list-style-type: none"> Work with land managers, planners and developers to minimise impacts from construction and development or identify alternative sites for placement of infrastructure.
Survey and monitoring	<ul style="list-style-type: none"> Undertake targeted field surveys to confirm the extent of all known populations and seek to discover previously undetected populations based on predicted habitat and ecological information. Monitor representative populations to determine trends and management needs.
Vegetation management	<ul style="list-style-type: none"> Implement localised vegetation management to mitigate the impacts of increased frequency and intensity of fire.

**Indicates landscape-scale actions that may deliver benefits to multiple species*

Past Actions

The key conservation management actions listed below have been delivered in the past 10 years.

Past Action	Description
Control deer	<ul style="list-style-type: none"> Implemented and maintained effective control of deer in priority areas.
Control feral pigs	<ul style="list-style-type: none"> Implemented and maintained effective control of feral pigs in priority areas.

Decision Support Tools

Decision making for conservation actions is supported through the following Victorian Government tools which may be of assistance in choosing the most appropriate or beneficial actions for biodiversity:

- [Choosing actions for nature](#)
- [Biodiversity Knowledge Framework](#)

Further Information

- [Fine-leaf Snow-grass Species Forecast Report](#)
- [Threatened Species Assessment Report - Fine-leaf Snow-grass \(*Poa clivicola*\)](#)
- [Victorian Deer Control Strategy](#)
- [Victoria's changing climate - understanding the impacts of climate change in Victoria](#)
- [Commonwealth Threat Abatement Plans](#)
- [Flora and Fauna Guarantee Regulations 2020](#)
- [IUCN criteria summary](#)

Get Involved and Take Action

If you are interested in supporting this species' recovery, there are some important things to consider.

The Department of Energy, Environment and Climate Action (DEECA) is committed to engaging and partnering with Traditional Owners on how they wish to be involved in the planning and implementation of actions for this species. Steps must be taken to avoid harm and where appropriate ensure actions can deliver cultural benefits.

You can find advice about required approvals, land manager and/or owner permissions, options and incentives for private land conservation, and engagement with Traditional Owners and public land managers here: [Action statements \(environment.vic.gov.au\)](#)

To identify the relevant Traditional Owners, use the [Aboriginal Cultural Heritage Register and Information System \(ACHRIS\) Welcome to Country and Acknowledgements Map](#).

You can also register your interest in taking action so we can connect you to other people or organisations working to help us secure the future for this species at threatened.species@deeca.vic.gov.au

Reporting Actions

Activity data are critical to monitoring the implementation and progress of actions and evaluating action statements. These data are also used to:

- determine progress towards achieving the contributing targets for [Protecting Victoria's Environment – Biodiversity 2037](#).
- inform the five-yearly State of the Environment Report.

For guidance on reporting actions undertaken on this species, refer to [Activity Data](#).

Submitting Monitoring Data

The Victorian Biodiversity Atlas (VBA) provides a foundational dataset showing where biodiversity occurs across the Victorian landscape and how it may have changed over time. As a core input for decision support tools that inform conservation action, public land management, research activities and reporting, we encourage all participants in the delivery of on-ground actions to submit species records and observations, including for weeds or introduced animals, as they carry out their projects.

For further information see: [Victorian Biodiversity Atlas \(environment.vic.gov.au\)](#)

Sign up and begin submitting your data today at: <https://vba.biodiversity.vic.gov.au/>

Acknowledgement

We acknowledge and respect Victorian Traditional Owners as the original custodians of Victoria's land and waters, their unique ability to care for Country and deep spiritual connection to it. We honour Elders past and present whose knowledge and wisdom has ensured the continuation of culture and traditional practices.

We are committed to genuinely partner, and meaningfully engage, with Victoria's Traditional Owners and Aboriginal communities to support the protection of Country, the maintenance of spiritual and cultural practices and their broader aspirations in the 21st century and beyond.



© The State of Victoria Department of Energy, Environment and Climate Action 2023



This work is licensed under a Creative Commons Attribution 4.0 International licence. You are free to re-use the work under that licence, on the condition that you credit the State of Victoria as author. The licence does not apply to any images, photographs or branding, including the Victorian Coat of Arms, the Victorian Government logo and the Department of Energy, Environment and Climate Action (DEECA) logo. To view a copy of this licence, visit <http://creativecommons.org/licenses/by/4.0/>

ISSN 1448-9902 (online)

Disclaimer

This publication may be of assistance to you but the State of Victoria and its employees do not guarantee that the publication is without flaw of any kind or is wholly appropriate for your particular purposes and therefore disclaims all liability for any error, loss or other consequence which may arise from you relying on any information in this publication.

Accessibility

If you would like to receive this publication in an alternative format, please telephone the DEECA Customer Service Centre on 136186, email customer.service@delwp.vic.gov.au or via the National Relay Service on 133 677 www.relayservice.com.au. This document is also available on the internet at www.environment.vic.gov.au